

# *Welcome to Worship*

*Reading from Genesis 9, Pastor Mark tells us about God's covenant with Noah and his descendants.*

August 24, 2014

## **A Vision of**

### **Faith, Hope and Love**

A Community of Faith,  
Transforming our city  
with Hope and  
Embracing our world  
with Love.

## **Sunday Schedule**

9:30 am	Adult Bible Study
10:30 am	Family Worship
12:00 pm	Fellowship Hour
1:00 pm	Choir Practice



*"I have set my rainbow in the clouds,  
and it will be the sign of the covenant  
between me and the earth."*

*Our Pastor: Mark Hofman*

*Our Ministers:*

*All Our Members*



2914 Encinal Avenue, Alameda, CA 94501

Phone & Fax: 510-521-0112

[www.alamedacrc.com](http://www.alamedacrc.com)

# Order of Worship for August 24, 2014

Prelude Carrie

Words of Welcome & Announcements Pastor Mark

Call to Worship: Genesis 4:26 – 5:2, 28-29 (p. 5) First Light

**\*\*Praise Songs:** *“Arky, Arky”* First Light

*“Did You Feel the Mountains Tremble” “I Love You, Lord”*

**\*\*God’s Greeting** Pastor Mark

**Song:** *“Guide Me, O My Great Redeemer”* (vs. 1-3)

**God’s Will for Our Lives:** 1 Peter 3:13-22 (p. 1272)

Prayers of the People Pastor Mark

Offering For General Fund

§ If you would like your offering to go to another cause, please indicate it on your check or a white pew envelope. § If you are a first time guest or returning visitor, please fill out a “Welcome Card” and place it in the Offering Basket as your gift.

Offertory Carrie

**\*\*Offering Response:** *“We Give Thee But Thine Own”* (vs. 1&2)

**Scripture:** Genesis 9:8-17 (p. 8) Pastor Mark

**Sermon:** **What’s the Point? The Point of No Return**

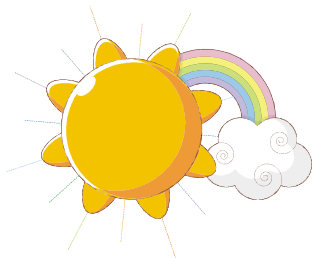
**\*\*Song:** *“You Are Our God; We Are Your People”* (vs. 1-4)

**\*\*Blessing** Pastor Mark

**\*\*Closing Song of Praise:** *“Lord, Dismiss Us with Your Blessing”*

Postlude Carrie

**\*\* Please stand if able.**



~~ Please use the back of a “Welcome Card” for any prayer requests you may have, and place it in the Offering Basket.

~~ Please join us in the Fellowship Hall after the service for refreshments, which will be followed by lunch.

***Today’s “Hosted Lunch” of pizza and salad is provided for us by the Alameda CRC Care Fellowship Fund. This is a limited fund, so if you can, please donate to the cause in the donation jar provided. Your contribution will be appreciated! Thank you!***